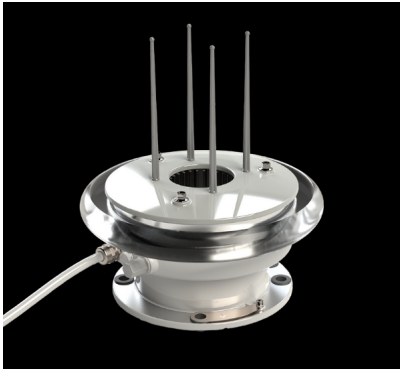


M44H



Long Range Lantern 20 NM by night, 3,4 NM by day M44H is high intensity omnidirectional lantern for lighthouses and other fixed platforms. M44H has modular structure and lantern is available as 1, 2 and 3 tier versions. Modularity allows intensity and power optimization for each site. M44H is controlled with Bluetooth and due to high efficiency and advanced heat management, M44H has exceptionally small footprint and low power consumption.

[Contacto Solicitar presupuesto](#)

Rating: Not Rated Yet

[Ask a question about this product](#)

Description

[Features](#)

Característica de M44H:

- High efficiency
- Compact size and light weight
- Small heat dissipation
- Bluetooth programming
- Maintenance free LED light source
- Modular structure for intensity and power optimization

- Range 31,5 NM by night and 4,1 NM by day @0.85T
- Adjustable day and night intensity
- Automatic day and night detection and transition

[Downloads](#)

Downloads

[Product Datasheet M44H \(pdf eng\)](#)

[Log in](#)

Log in extranet